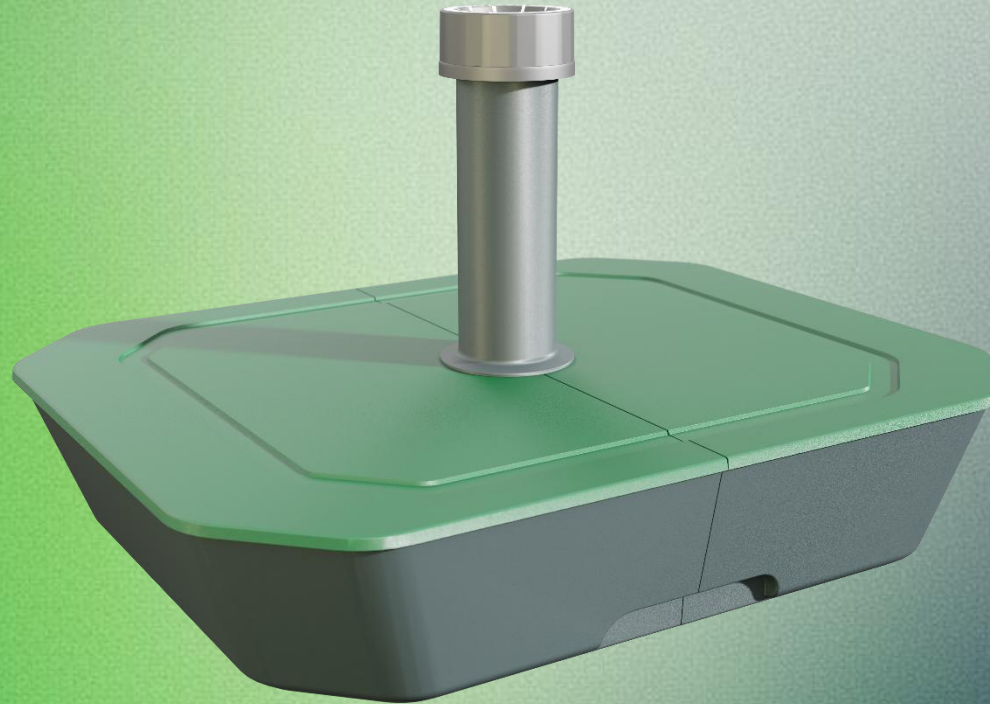


6-SERIES



the bases factory



CONTENTS



01 Recycling

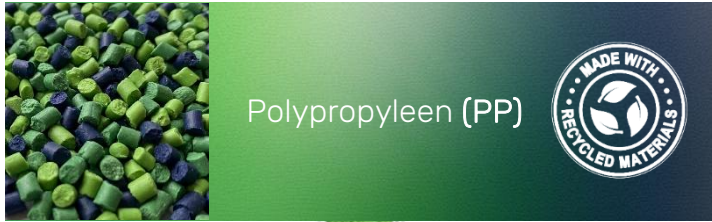
02 Overview

03 Tubes

04 Weight

05 Colour

06 Packaging





Overview

- Compact
- Large quantities per pallet
- Sustainable product
- Easy to assemble
- Fillable with sand and water
- Various versions and colours

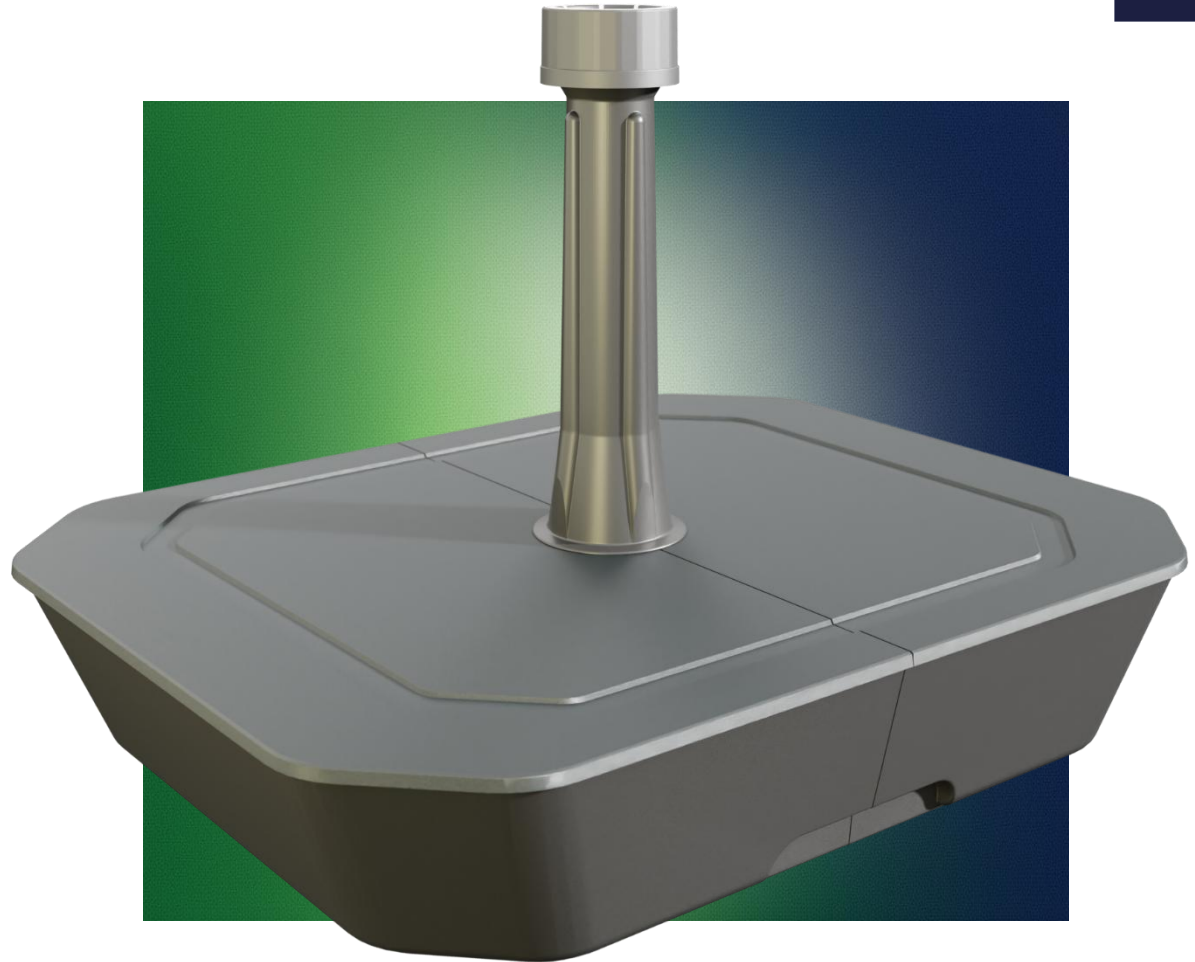


03 Tubes



L 500 W 400 H 100 mm
Total height: 354 mm

38 mm



Material: Polypropylen (PP)

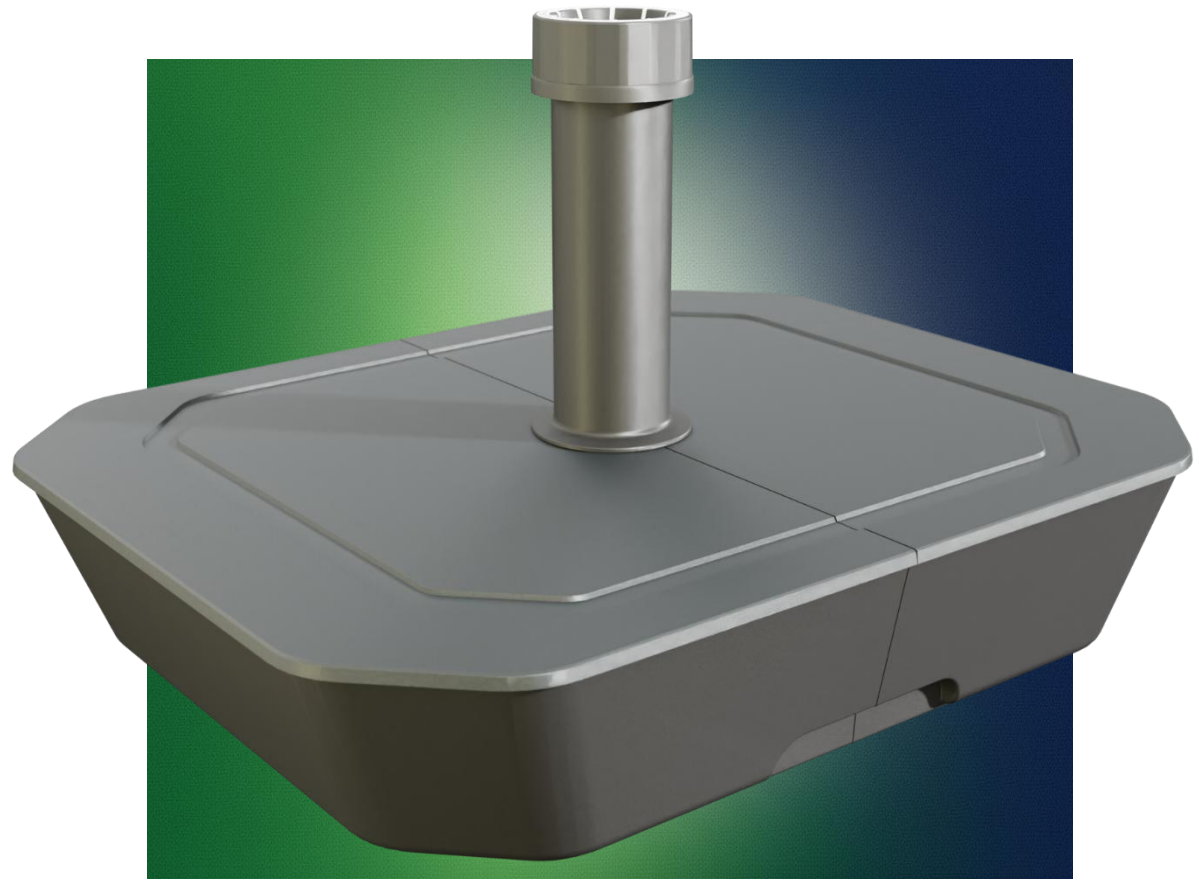
 **Ø 19-38 mm – Max. 3 m**

03 Tubes



L 500 W 400 H 100 mm
Total height: 319 mm

54 mm



Material: Polypropylen (PP)

 **Ø 21-54 mm – Max. 3 m**

03 Tubes

Supergrip

Reducer 38 mm

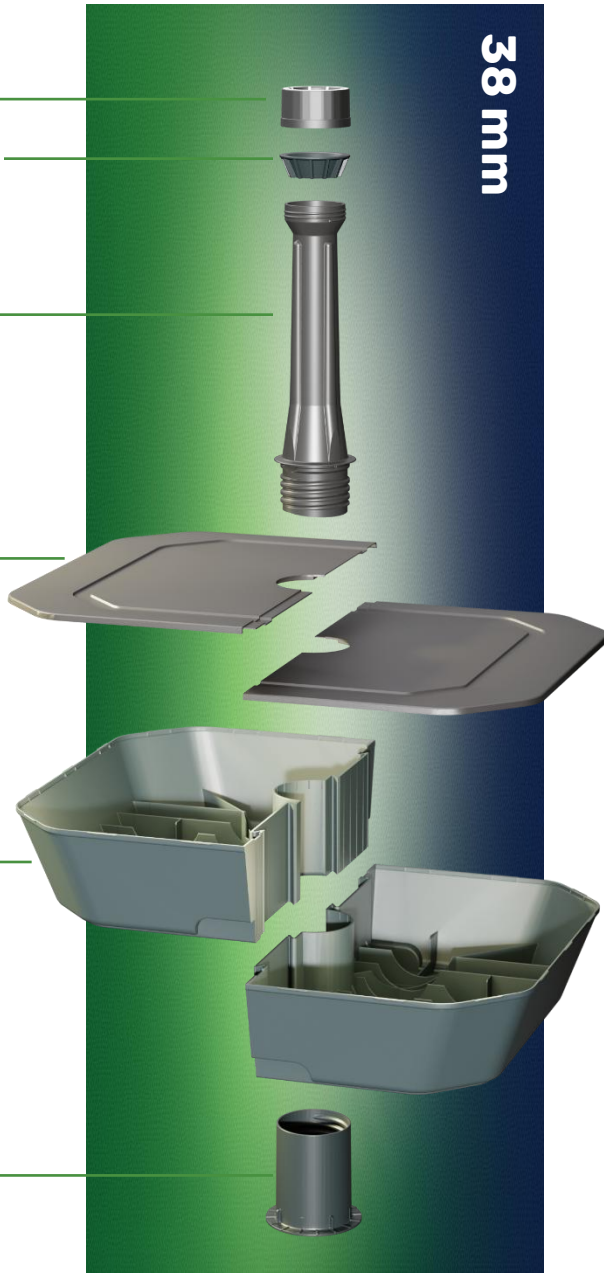
Tube 38 mm

Lid

Base

Tower

38 mm



54 mm

Supergrip

Reducer 54 mm

Tube 54 mm

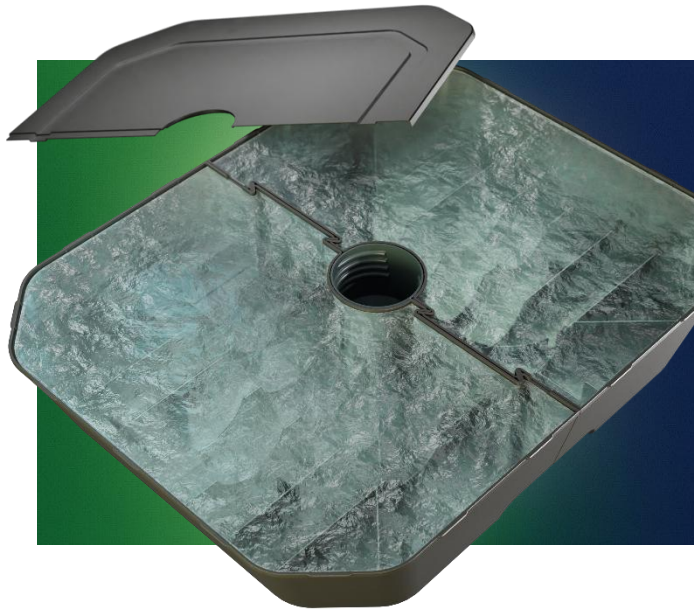
Lid

Base

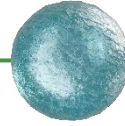
Tower



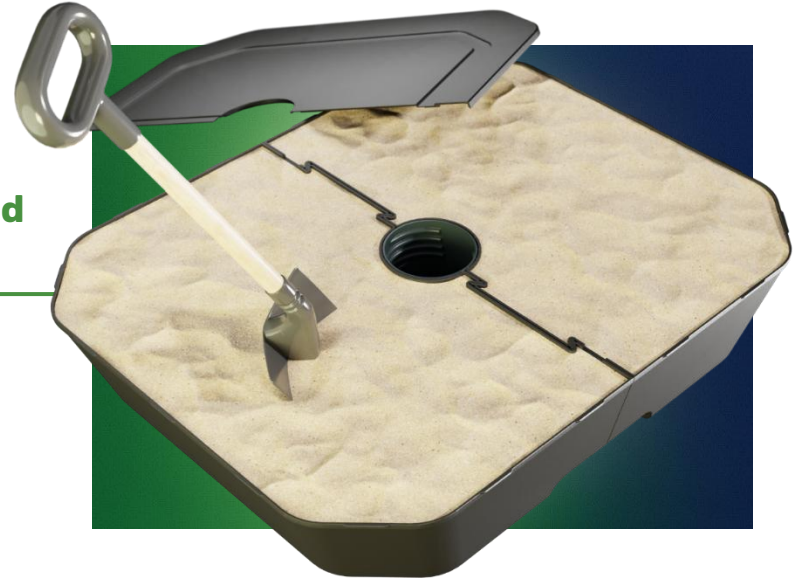
04 Weight



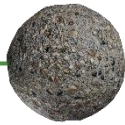
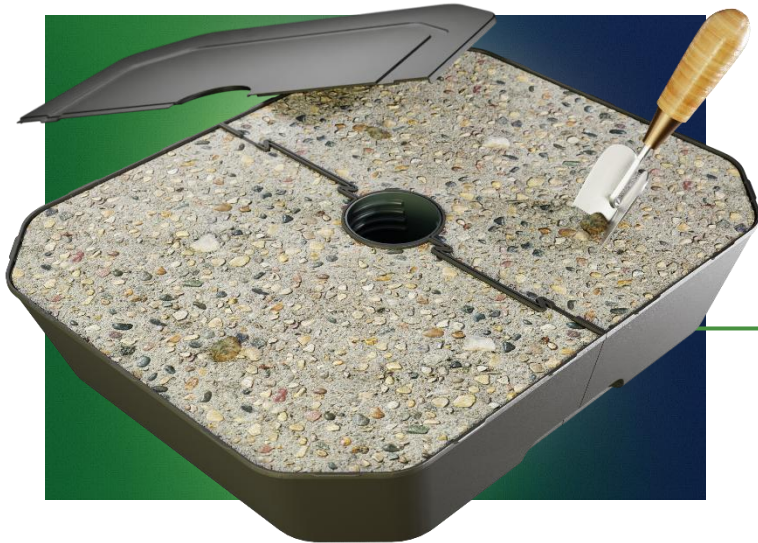
Water
up to 15 kg



Water and sand
up to 25 kg



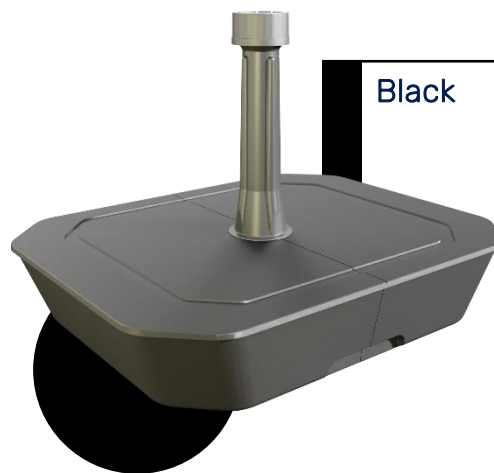
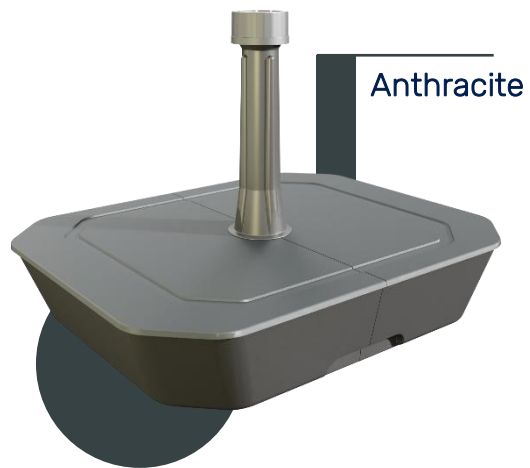
Water, sand and gravel
up to 30 kg



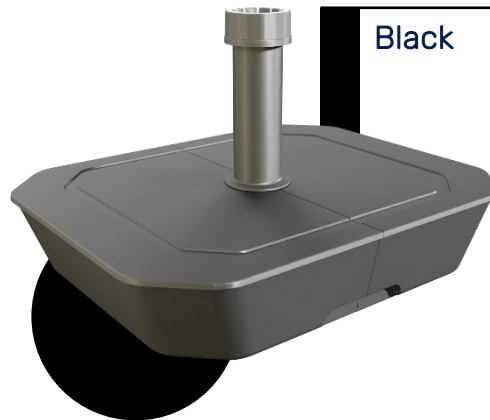




38 mm



54 mm





Box

Europallet

Max. height 1,80 m (incl. pallet): 90 units

Package dimensions

40,3 x 28 x 15,5 cm





6-SERIES

the bases factory